



LEDO

Edel, innovativ und formschön

Der Leder-Fertigboden von LICO ist ein Leder-Faserstoff, welcher aus echtem, recyceltem, chromfreien Leder, Naturlatex, Naturfett und Naturgerbstoffen hergestellt wird. Edel im Design, durch die umweltfreundliche Versiegelung extrem strapazierfähig, lässt sich mit diesem natürlichen Boden ein einzigartiges Ambiente gestalten.

LICO hat sein ganzes Wissen und die langjährige Erfahrung in diesen sinnlichen Fertigboden einfließen lassen, um das persönliche Empfinden von Eleganz, Wärme und Gefühl der Menschen zu steigern.

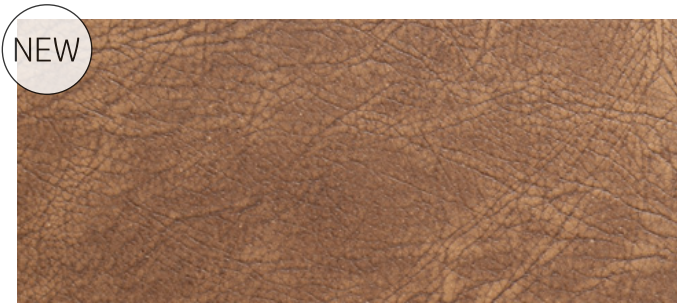
Refined and innovative, with a beautiful design

The leather floating floor from LICO is a leather fibre produced from genuine, recycled, chrome-free leather, natural latex, natural oils and natural tanning agents. With its elegant design and its extreme durability thanks to its environmentally friendly sealing, this natural flooring enables you to create an unique ambience.

LICO has invested all its know-how and many years of experience in this sensual floating floor to enhance people's personal sense of elegance, warmth and feeling.

LEDO

Edel, innovativ und formschön
Refined and innovative, with a beautiful design



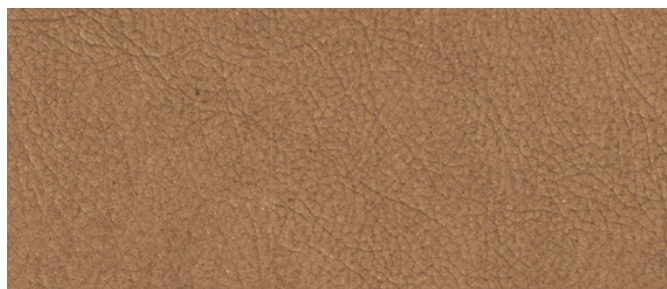
NEW

Pure

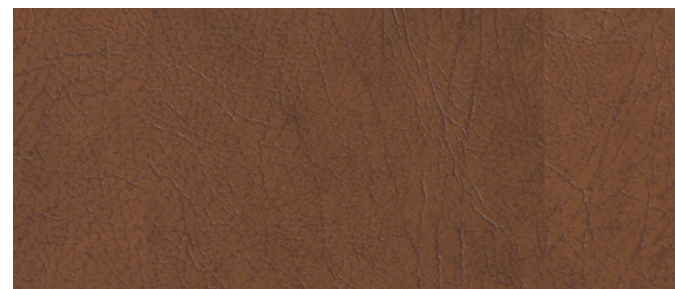


NEW

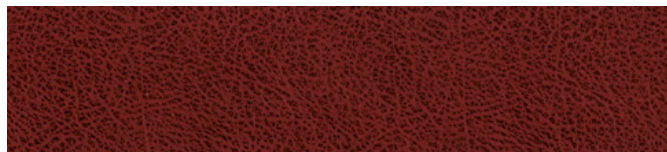
Clube



Cognac



Tobacco



7PL2102

Toro Bordeaux / Toro Bordeaux



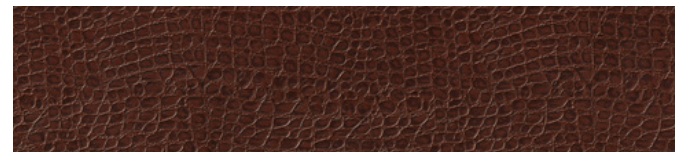
7PL2101

Toro Chocco / Toro Chocco



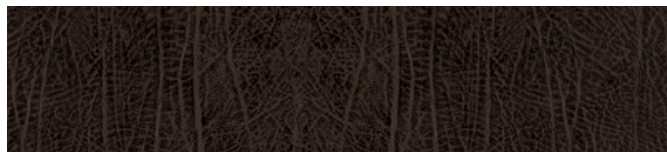
7PL2003

Mamba Sand / Mamba Sand



7PL27

Cobra Bordeaux / Cobra Bordeaux



7PL9

Buffalo Mocca / Buffalo Mocca



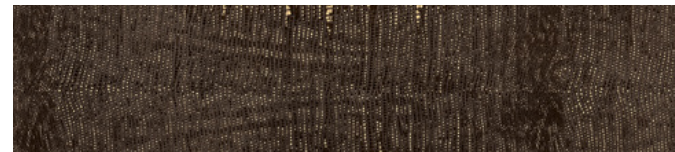
7PL41/119

Waran Beige / Waran Beige



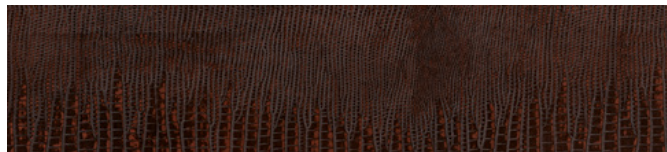
7PL2306

Boa Silver / Boa Silver



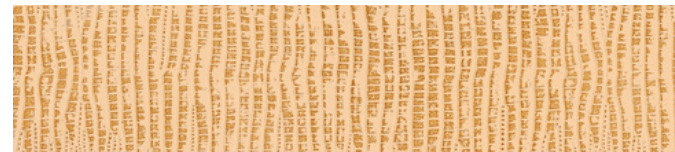
7PL2301

Boa Exotic / Boa Exotic



7PL2302

Boa Oxyd / Boa Oxyd



7PL2305

Boa Sand / Boa Sand

LEDO

Edel, innovativ und formschön
Refined and innovative, with a beautiful design



KLASSE 23 / 32
CLASS 23 / 32



NATURPRODUKT
NATURAL PRODUCT



FUSSBODENHEIZUNG
UNDERFLOOR HEATING

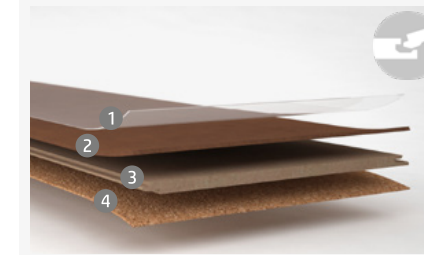


LICHTECHTHEIT 7 / 8
LIGHTFAST 7 / 8



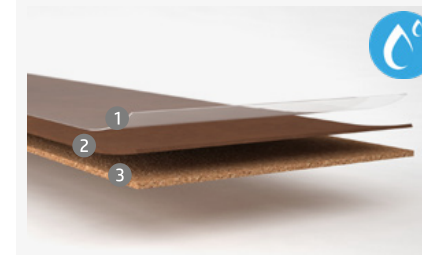
PFLEGELEICHT
EASY TO CARE

HDF ca. 10,5 mm



- 1 Hot Coating
Hot Coating
- 2 Echtes, gebundenes Leder
Real bonded leather
- 3 Feuchtigkeitshemmende Natur Faserplatte
Moisture retardant fibre-board
- 4 Presskork Gegenzug
Cork underlay

Fliese / Tiles ca. 6,0 mm



- 1 Hot Coating
Hot Coating
- 2 Echtes, gebundenes Leder
Real bonded leather
- 3 Kork Composite
Cork Composite

Formate / Dimensions

620 x 450 mm

915 x 305 mm



Wärmeisolierend
Thermal insulation



Chromfreies Leder
Chrom-free leather



Schall- und Trittschallisolierung
Sound impact and phonic insulation



Fusswarm
Warm to the touch



Verwendung nachwachsender Rohstoffe
Use of regrowing raw material



Gelenkschonend
Soft to the tread





Li&Co AG
Palü Daint 226
CH-7537 Müstair
TEL +41 (0)81 850 38 38
FAX +41 (0)81 850 38 39
info@lico.ch - www.lico.ch